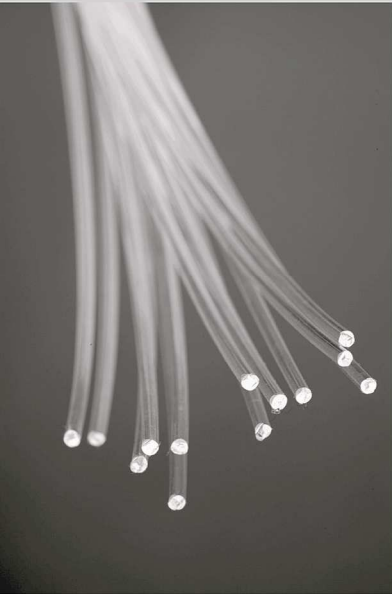


Emco Meditek has been manufacturing Pulse Oximeters since 1989, with an installation base of more than 8000 Pulse Oximeters.

Now comes the EMCO oxi-mri 3600 MRI Compatible Pulse Oximeter incorporating fiber optic SpO2 sensor, for MRI environment compatibility



Emco Meditek, an ISO9001:2008 & ISO13485:2003 certified company, was formed in the year 1989 with the main objective of manufacturing and marketing of Electronic Medical Equipment. The equipment are designed and manufactured indigenously with the assistance of technology obtained from leading Medical Equipment manufacturing companies around the world especially USA, UK and Germany.

ISO 9001:2008



www.tuv.com
ID 0910079221



EMCO MEDITEK® PVT. LTD.

An ISO9001:2008(TUV Rheinland) & ISO13485:2003(Zenith/ASCB) Certified Company

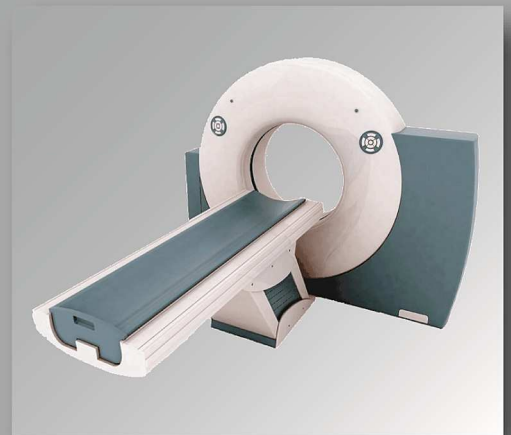
EMCO oxi-mri 3600

MRI COMPATIBLE PULSE OXIMETER



- 20 feet Fiber Optic Sensor (non-magnetic) avoids potentially hazardous heating or image artefacts during MR Scans
- Suitable for use in 0.5 to 3 Tesla MRI environment
- Noise/Artefact free MR images
- Bright LED & LCD display which is easily visible from MRI Console Room

- Built-In Rechargeable Battery back-up of 6 hours (approx. 8 procedures)
- Alarm for sensor disconnection either from patient or from oximeter
- Provides fast & reliable SpO2 and Pulse rate measurements
- Suitable for Adult, Paediatric & Neonate
- Audible & Visual Low battery indication





Technical Specifications (Magnet types - 0.5 to 3.0 Tesla)

Displays, Indicators & Keys

LED Display 0.4"	SpO2, Pulse Rate
LCD Display	240x64 pixels, Blue, STN, Transmissive, Negative, White LED Backlight, Viewing Area 132x33mm (5.2")
3 colour LED 5mm	Display of Plethysmograph, Bargraph, Alarm Limits
Yellow LED 3mm	Perfusion Status
Green LED	Battery
Keys	Charging
	On/Off, Menu, Up, Down, Cancel, Wave/Trend, Freeze, Silence

SpO2 Accuracy (A_{rms})^a (at 70-100%)

No Motion	±2 digits
Motion	±3 digits
Low Perfusion	±3 digits
Range	0 - 100%
Averaging	4, 8, 16 beat - automatic
Sensor	Fiber Optic Sensor - 20 feet

Pulse Rate Accuracy (A_{rms})^a

No Motion	±3 digits
Motion	±5 digits
Low Perfusion	±3 digits

Note : ±1 A_{rms} represents approximately 68% of measurements

Range	18 to 300 bpm
Averaging	8,16, 32 beat - automatic

Plethysmograph

Wave Speed	12.5, 25, 50 mm/sec (1.5, 3, 6 sec.)
Display type	Line or Fill
Gain	Automatic Gain Control
Wave Freeze	Scrolling available for 15 – 60 sec

Pulse Beep

Pulse Beep	Tone changes with SpO ₂ value
Alarm & Beep Volume	User selectable in steps of 1 to 10

Alarms

Sensor Disconnected, Limit Violations, Low Battery

Silence

2 min Silence, Alarm Silence, Beep Silence, All Silence

Alarm Ranges

	High	Low
SpO2	1 to 100% & OFF	0 to 100% (in 1% steps)
Pulse	5 to 300 bpm	0 to 295 bpm (in 5 bpm steps)

Memory Trends

(available on Display)
Past Trends of SpO₂, Pulse Rate & Signal Strength for 72 hours (3 days)

Trends available on Display

15min, 1hr, 2hrs, 4hrs, 8hr, 24hrs
(Default 4 hr Trend)
Past Trends of 1000 Alarm Violations

Power Requirements

Battery	Rechargeable Built-in Sealed Lead Acid Battery - 6V, 1.2Ah
Charging Time	8 hours
Battery Backup	6 hours
AC Mains	230±15%Vac, 50 Hz

Classification as per IEC 60601-1

Type of Protection : Class I
Degree of Protection : Type BF - Applied Part
Mode of Operation : Continuous

Degree of Ingress Protection : IPX1

Dimensions	Width	Height	Depth	Weight
	9.45" (240mm)	3.35" (85mm)	8.66" (220mm)	2.4 kgs (5.3 lbs)

Environmental Specifications

Operating Temperature	0 to 45 deg. C
Storage Temperature	-20 to 70 deg.C
Relative Humidity	10 to 90% Non-condensing (operating) 10 to 95% Non-condensing (storage)

MRI Fiber Optic Pulse Oximeter Sensor

Measurement Wavelengths & Output Power **

Red 660 nanometers @ 0.8 mW maximum average
Infrared 910 nanometers @ 1.2 mW maximum average

**This information is especially useful for clinicians performing photodynamic therapy.

Specifications subject to change without prior notice.



At the heart of healthcare

EMCO MEDITEK® PVT. LTD.

Factory :

Luna Road, Post Dabhasa,
Taluka Padra, District Baroda - 391440, India
Phone : +91-2662-223397 / 98
Fax : +91-2662-223397
E-mail : emcomeditek@gmail.com

Head Office :

Unit No. 109, Vasani Udyog Bhavan,
Off. Senapati Bapat Road, Lower Parel, Mumbai 400 013
Phone : +91-22-24903653 • Fax : +91-22-24970102
E-mail : emeditek@emcomeditek.com
Website : http://www.emcomeditek.com
CIN : U32109MH1989PTC053525